

**NSI**



#699  
August 1968

Central  
Florida  
Stamp  
Club



Central  
Florida  
Stamp  
Club

The Cover Story

U.S. Bureau Precancels

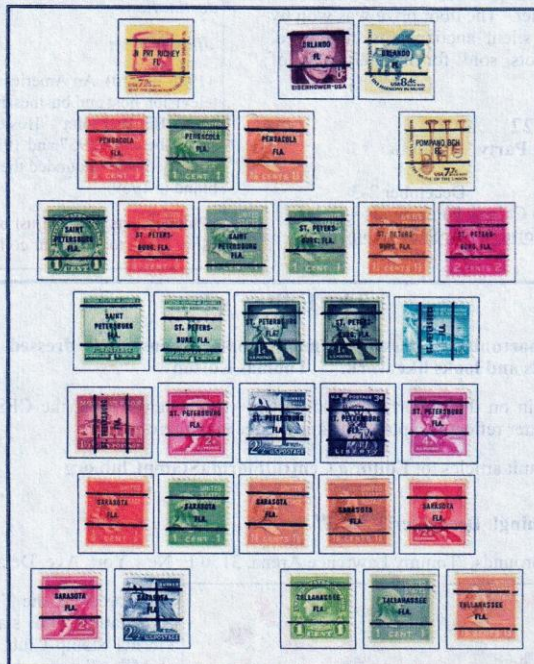


Figure 3  
Florida  
Precancels





PEACE UNITES A NATION

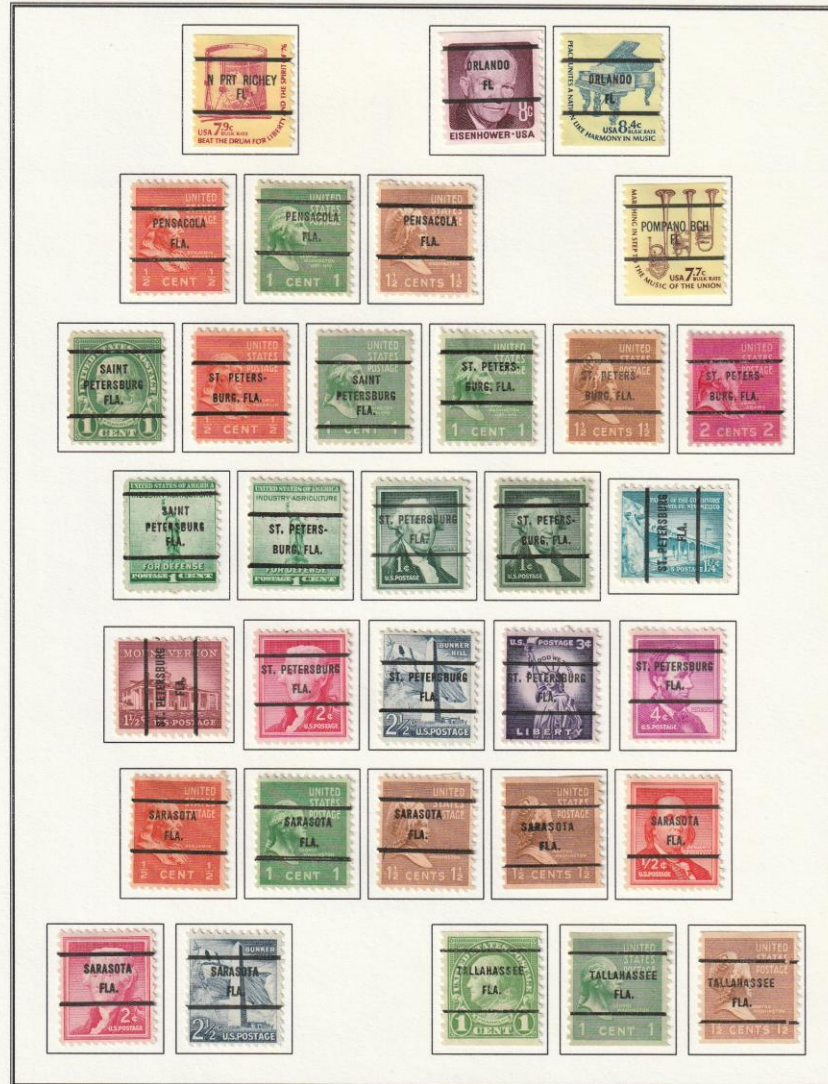
ORLANDO

FL

USA 8.4c BULK RATE

LIKE HARMONY IN MUSIC

United States Bureau Precancels  
Florida



National and Service Inscribed  
Precancels



1415a-1418a N1.2 6¢ 1970  
CHRISTMAS TOYS

WA, BEP Sheet perf 11 x 10 1/2

Designs: 1415a - Train, 1416a - Horse, 1417a - Tricycle, 1418a - Buggy



1584a - N1.3 3¢ 1977

BALLOT BOX

WA, BEP Sheet perf 11 1/4 x 10 1/2



1585a - N1.3 4¢ 1977

BOOKS

WA, BEP Sheet perf 11 1/4 x 10 1/2



1591a N1.3 9¢ 1975

CAPITOL

WA, BEP Sheet perf 11 1/4 x 10 1/2



1596 N1.4 13¢ 1975

EAGLE AND SHIELD

WA, BEP Sheet perf 11 1/4 x 10 1/2



1606 N1.3 30¢ 1979

SCHOOL

WA, BEP Sheet perf 11 x 10 1/2



1608v1 N1.3 50¢ 1979

BETTY LAMP

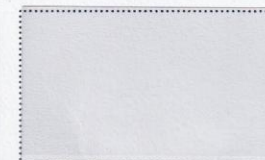
WA, BEP Sheet perf 11



1608v2 N1.4 50¢ 1979

BETTY LAMP

WA, BEP Sheet perf 11



1608v3 N1.5 \$.50

BETTY LAMP

WA, BEP Sheet perf 11

National and Service Inscribed  
Precancels



1288a N 1.3 15¢ 1968  
OLIVER WENDELL HOLMES  
WA sheet perf 11 x 10 1/2 BEP



1289 N 1.3 20¢ 1967  
GEORGE C. MARSHALL  
WA sheet perf 11 x 10 1/2 BEP



1297b v1 N 1.3 3¢ 1975  
FRANCIS PARKMAN  
WA, BEP Coil Perf 10  
Shiny gum



1297b v2 N 4.3 3¢ 1975  
FRANCIS PARKMAN  
WA, BEP Coil Perf 10  
Dull gum



1297b v2 N4.3 3¢ 1975  
FRANCIS PARKMAN  
Dull gum, imperforate



1414a N 1.1 6¢ 1970  
NATIVITY  
WA, BEP Sheet perf 10 1/2 x 11  
Type I, grayish black lines



1414e N 1.1 6¢ 1970  
NATIVITY  
WA, BEP Sheet perf 10 1/2 x 11  
Type II, intense black lines with gum breakers



1552 SI 10.1, 10¢ 1974  
DOVE WEATHER VANE  
SA, BEP Die cut perpendicular lines through dove, most examples discolored by adhesive used



1297b v1 N 1.3 3c 1975  
 FRANCIS PARKMAN  
 WA, BEP Coil Perf 10  
 Shiny gum



1297b v2 N 4.3 3c 1975  
 FRANCIS PARKMAN  
 WA, BEP Coil Perf 10  
 Dull gum



1297b v2 N4.3 3c 1975  
 FRANCIS PARKMAN  
 Dull gum, imperforate

National and Service Inscribed  
Precancels



1610v1 N1.3 \$1.00 1979  
CANDLE  
WA, BEP Sheet perf 11



1610v2 N1.4 \$1.00 979  
CANDLE  
WA, BEP Sheet perf 11



1613 SI 13.1 3.1e 1979  
GUITAR  
WA, BEP Coil perf 10



1613a N1.3 & SI 13.1 3.1e 1979  
GUITAR  
WA, BEP Coil perf 10



1613a N 1.3 & SI 1.13 3.1e 1979  
GUITAR  
WA, BEP Imperforate



1614a SI 11.1 7.7e 1976  
SAXHORNS  
WA, BEP Coil perf 10



1614a SI 11.1 7.7e 1976  
SAXHORNS  
WA, BEP Imperforate



1615 (8) SI 11.1 7.9e 1976  
DRUM  
WA, BEP Coil perf 10 Shiny gum



1615 (8) N 3.1 & SI 11.1 7.9e 1976  
DRUM  
WA, BEP Coil perf 10, Dull gum



1615 (8) SI 11.1 7.9e 1976  
DRUM  
WA, BEP Shiny gum, Imperforate



1615av1 N3.1 & SI 11.1 7.9e 1976  
DRUM  
WA, BEP Coil perf 10. "R" curved out



1615av2 N3.15 & SI 11.1 7.9e 1976  
DRUM  
WA, BEP Coil Perf 10. "R" curved down



1613 SI 13.1 3.1¢ 1979  
GUITAR  
WA, BEP Coil perf 10



1613a N1.3 & SI 13.1 3.1¢ 1979  
GUITAR  
WA, BEP Coil perf 10



Six-string  
Guitar — A1011



Saxhorns — A1012



Drum — A1013



Steinway Grand  
Piano,  
1857 — A1014

Designers: 3.1c, George Mercer. 7.7c, Susan Robb. 7.9c, Bernard Glassman. 10c, Walter Brooks. 15c, V. Jack Ruther.

COIL STAMPS  
ENGRAVED

1975-79

*Perf. 10 Vertically*

1613	A1011	3.1c	brown, yellow, Oct. 25, 1979	.25	.25
			Pair	.50	.50
			Joint line pair	1.25	—
<i>a.</i>			Untagged (Bureau precanceled, lines only)	.35	.35
			Pair	.70	.70
			Joint line pair	7.00	—
<i>b.</i>			Imperf., pair	850.00	—
			Joint line pair	—	—
1614	A1012	7.7c	brown, bright yellow,		

National and Service Inscribed  
Precancels



1903 SI 11.2 9.3c 1984  
MAIL WAGON  
WA, BEP Coil perf 10



1903a N 1.3 & SI 11.2 9.3c 1984  
MAIL WAGON  
WA, BEP Coil perf 10



1903a N 1.3 & SI 11.2 9.3c 1984  
MAIL WAGON  
WA, BEP Imperforate



1904 SI 11.2 10.9c 1982  
HANSOM CAB  
WA, BEP Coil perf 10



1904a N 1.3 & SI 11.2 10.9c 1982  
HANSOM CAB  
WA, BEP Coil perf 10



1904a N 1.3 & SI 11.2 10.9c 1982  
HANSOM CAB  
WA, BEP Imperforate



1905 SI 11.3 11c 1984  
CABOOSE  
WA, BEP Coil perf 10



1905a N 1.3 & SI 11.3 11c 1984  
CABOOSE  
WA, BEP Coil perf 10



1906av1 (7) N 2.1 17c 1984  
ELECTRIC AUTO  
WA, BEP Coil perf 10  
"PRESORTED" 11.3 mm



1906av3 (7) N 3.1 17c 1984  
ELECTRIC AUTO  
WA, BEP Coil perf 10  
"PRESORTED" 12.8mm short dash



1906av4 (7) N 4.1 17c 1984  
ELECTRIC AUTO  
WA, BEP Coil perf 10  
"PRESORTED" 11.3 mm / 3.2



1906av5 (7) N 4.15 17c 1984  
ELECTRIC AUTO  
WA, BEP Coil perf 10  
"PRESORTED" 14 mm



1906av2 (7) N 2.1 & N 4.1 17c 1984  
ELECTRIC AUTO  
WA, BEP Coil perf 10

Pair with two different types- either order

National and Service Inscribed  
Precancels



2457 SI 15.3 10¢ 1991  
TRACTOR TRAILER  
WA, BEP Coil perf 10 Intaglio printing, gray



2457 SI 15.3 10¢ 1991  
TRACTOR TRAILER  
WA, BEP Intaglio printing, gray, Imperforate



2458 SI 15.3 10¢ 1994  
TRACTOR TRAILER  
WA, BEP Coil perf 10 Gravure printing, black



2602 SI 11.6 10¢ 1991  
EAGLE (Gold)  
WA, ABN Coil perf 10 "Bulk rate" in blue.



2603 (9) SI 11.7 10¢ 1993  
EAGLE (Brown)  
WA, BEP Coil perf 10 "Bulk rate" in red, Large date, shiny gum



2603 (9) SI 11.7 10¢ 1993  
EAGLE (Brown)  
WA, BEP Coil perf 10 "Bulk rate" in red, Large date, dull gum



2603 (9) SI 11.7 10¢ 1993  
EAGLE (Brown)  
WA, BEP Imperforate "Bulk rate" in red, Large date.



2604 (10) SI 11.7 10¢ 1993  
EAGLE (Gold)  
WA, SV Coil perf 10 "Bulk rate" in red Small date, Shiny gum



2604 (10) SI 11.7 10¢ 1993  
EAGLE (Gold)  
WA, SV Coil perf 10 "Bulk rate" in red Small date, Dull gum



2605 SI 15.5 23¢ 1993  
FLAG & PRESORTED FIRST CLASS  
WA, ABN Coil perf 10



3693 SI 14.1 5¢ 2002  
SEA COAST  
SA BCA Coil Serpentine die cut  
perf 8.25, orange cloud



3775 SI 14.1 5¢ 2003  
SEA COAST  
WA, BCA Coil perf 9.75,  
"2003" blue, orange cloud.



3785 (17) SI 14.1 5¢ 2003  
SEA COAST  
SA AP Coil Serpentine die cut  
perf 9.5 x 10 all four sides  
Backing paper taller than stamp.



3785a (17) SI 14.1 5¢ 2003  
SEA COAST  
SA, AP Coil Serpentine die cut perf  
9.25 x 10 all four sides, large "2003",  
Backing paper taller than stamp.



3864 SI 14.1 5¢ 2004  
SEA COAST  
WA, SSP Coil perf 9.75, indis-  
tinct cloud, black "2004"



3874 (18) SI 14.1 5¢ 2003  
SEA COAST  
SA, AP Coil Serpentine die cut  
perf 10, large "2003",  
Backing paper taller than stamp.



3874a SI 14.1 5¢ 2003  
SEA COAST  
SA, AP Coil Serpentine die cut  
perf 10, small "2003"  
Backing paper taller than stamp.



3875 SI 14.1 5¢ 2004  
SEA COAST  
SA, SSP Coil serpentine die cut perf 11.5,  
Backing paper taller than stamp



4348 SI 14.1 5¢ 2008  
SEA COAST  
WA, SSP Coil perf 9.75, small date  
Micro printed "USPS" at end of purple rock.



2903 SI 14.2 5¢ 1996

MOUNTAIN

WA, BEP Coil perf 9.8

Letters outlined in purple, "1996" in purple



2904 SI 14.3 5¢ 1996

MOUNTAIN

WA, SV Coil perf 9.8, Letters not outlined,

"1996" in blue.



2904 SI 14.3 5¢ 1996

MOUNTAIN

WA, SV Imperforate, Letters not outlined,

"1996" in blue.



2904A (13) SI 14.3 5¢ 1996

MOUNTAIN

SA, BEP Coil Serpentine die cut perf 11.2

Letters outlined, "1996" large, purple.



2904B (14) SI 14.2 5¢ 1997

MOUNTAIN

SA, BEP Coil Serpentine die cut perf 9.8

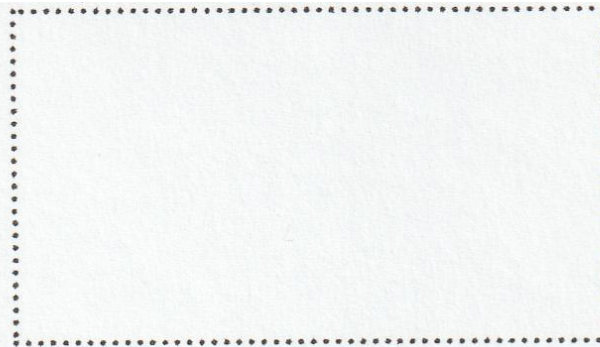
Letters outlined, "1997" large, purple



2911 SI 15.9 25¢ 1995  
JUKE BOX

WA, BEP Coil perf 9.8

Dark colors, lines in music board, small date



2911 SI 15.9 25¢ 1995  
JUKE BOX

WA, BEP Imperforate

Dark colors, lines in music board, small date



2912 SI 15.9 25¢ 1995  
JUKE BOX

WA, SV Coil perf 9.8. Bright colors,

light lines in music board, large black date



2912A SI 15.9 25¢ 1996  
JUKE BOX

SA, SV Coil Serpentine die cut perf 11.5



2912B SI 15.9 25¢ 1997  
JUKE BOX

SA, BEP Coil Serpentine die cut perf 9.8



3132 SI 15.9 25¢ 1997  
JUKE BOX

SA 3M Coil, Simulated perfs, black "1996"



3270 SI 15.4 10¢ 1998  
EAGLE

WA, ABN Coil perf 9.8, "1998" 1 1/4 mm.



3270a SI 15.4 10¢ 1998  
EAGLE

WA, ABN Coil perf 9.8, "1998" 1 3/4 mm.



3271 (11) SI 15.4 10¢ 1998  
EAGLE

SA, ABN Coil Serpentine die cut  
perf 9.9, "1998" 1 1/4 mm.



3271a SI 15.4 10¢ 1998  
EAGLE

SA, ABN Coil Serpentine die cut  
perf 9.9, "1998" 1 3/4 mm.

National and Service Inscribed  
Precancels



4585-4590 SI 16.8 25¢  
EAGLE ON COLORED  
BACKGROUNDS  
SA, AD Coil Serpentine die cut perf 11  
Color identified is the one behind "USA"  
Date near lower right corner.  
4585 - Green  
4586 - Blue green  
4587 - Blue  
4588 - Red violet  
4589 - Brown orange  
4590 - Yellow orange



4808-4812 SI 16.9 25¢ 2013  
SNOWFLAKE  
SA, CCL Coil Serpentine die cut perf 11  
Five different snowflakes identified by picture



4961-4963 SI 16.8 10¢ 2015  
STARS AND STRIPES  
SA, SSP Coil Serpentine die cut perf 11  
Self adhesive die cut perf 11  
4961 - stars on right; 4962 - stars in center; 4963 - stars on left



5061 SI 14.4 15 5¢ 2016¢  
USA STAR  
SA, AP Coil Serpentine die cut perf 10  
No border

## National and Service Inscribed Precancels



5664 - SI 14.5 5c 2022  
Butterfly Garden Flowers (3)  
SA BCA Coil Serpentine

5665 - SI 14.5 5c 2022  
Butterfly Garden Flowers (2)  
SA BCA Coil Serpentine

Butterfly Garden Flowers  
Plate # strip of 5  
Plate # B1111



### Flags on Barns

Red barn near  
Well  
5684 - SI 17.3  
10c 25c 2022  
SA, AP  
Coil serpentine  
die cut 10.5

White barn in  
winter  
5685 - SI 17.3  
10c 25c 2022  
SA, AP  
Coil serpentine  
die cut 10.5

White barn with  
gambrel roof  
5686 - SI 17.3  
10c 25c 2022  
SA, AP  
Coil serpentine  
die cut 10.5

Barn near  
windmill  
5687 - SI 17.3  
10c 25c 2022  
SA, AP  
Coil serpentine  
die cut 10.5

Patriotic Block  
5756 - SI 14.6  
5c 15c Mar. 2023  
SA, BCA  
Coil serpentine die cut 10 3/4



Patriotic Block  
5756a SI 14.6 2  
5c 15c Nov. 2  
SA, BCA  
Height of "2023" @ 2.14 mm  
with numerals farther apart  
than on 5756  
Coil serpentine die cut 10 3/4



### Bridges

Bob Kerrrey Pedestrian  
Bridge - Omaha, NE  
5808 - SI 17.4  
25c \$1.00 2023  
SA AP  
coil perf 10

Skydance Bridge  
Oklahoma City, OK  
5809 - SI 17.4  
25c \$1.00 2023  
SA AP  
coil perf 10

Iowa-Illinois  
Memorial Bridge  
Bettendorf, IA to  
Moline, IL  
5810 - SI 17.4  
25c \$1.00 2023  
SA AP  
coil perf 10

Arrigoni Bridge  
Middletown CT to  
Portland, CT  
5811 - SI 17.4  
SA AP  
coil perf 10

Precancels



Stylized Beach	Stylized10 Mountains
5958 - SI 16.4	5950 - SI 16.4
10c Feb 21, 2025	10c Feb 21, 2025
SA AP	SA AP
Coil perf 10.5	Coil perf 10.5

**CATALOG OF  
NATIONAL  
AND  
SERVICE INSCRIBED  
PRECANCELS**

FIRST EDITION  
Revised August 2024

A supplement to the sixth edition of  
*The Precancel Stamp Society*  
*Catalog of United States*  
*Bureau Precancels*





MAIL WAGON  
1890's

9.3¢ Bulk Rate  
COIL STAMP

TRANSPORTATION SERIES - 1981

OFFICIAL  
FIRST DAY  
OF ISSUE



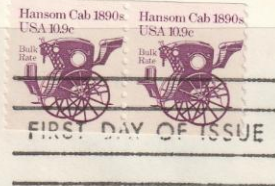
FIRST DAY OF ISSUE



Hansom Cab  
1890's  
10.9¢ Bulk Rate  
Coil Stamp

TRANSPORTATION SERIES - 1982

OFFICIAL  
FIRST DAY OF ISSUE



FIRST DAY OF ISSUE



Caboose 1890's  
11¢ Coil Stamp

TRANSPORTATION SERIES 1984



OFFICIAL FIRST DAY OF ISSUE

RAIL EQUIPMENT FOR  
USE ON A LOGGING ROAD



FIRST DAY OF ISSUE



Copyright U.S. Postal Service 1988

*Issue Date:* June 27, 1988

*First Day City:* Washington, D.C.

*Designer:* James Schleyer  
Burke, Virginia

*Typographer:* Bradbury Thompson, Design  
Coordinator, Citizens' Stamp  
Advisory Committee

*Art Director:* Mary M. Grant, General Manager,  
Philatelic Marketing Division,  
U.S. Postal Service

*Postal Service Manager:*  
Joe Brockert, Program Manager  
for Philatelic Design

*Engravers:* Edward P. Archer (vignette);  
Robert G. Culin, Sr. (lettering and  
numerals), Bureau of Engraving  
and Printing (BEP)

*Printing Process:* Intaglio (B Press, BEP)

*Color:* Blue (vignette and type)  
Red ("Bulk Rate/Carrier Route Sort"  
endorsement)

*Plate Number:* One single digit on every 52nd  
stamp

*Stamps per coil:* 500 and 3,000  
(precanceled only)

## Oil Wagon Coil Stamp

The Postal Service issued a 10.1-cent Oil Wagon stamp on June 27, in Washington, D.C. The stamp is a reissue with a new precancellation. A mint and precanceled stamp of this design were previously issued on April 18, 1985.

This is the second Transportation Series stamp issued this year. The stamp design features a pen and ink rendition of an 1890s oil wagon. The wagon depicted has a high, canopied cab situated at the front of the four-wheeled wagon, the bulk of which carries a large, cylindrical container marked "oil."

By the late 19th century, oil wagons, usually drawn by two or more horses, were a common sight in many areas of the country. Used primarily to deliver oil for home heating and stove and lantern fuel, these wagons were distinguished by a large metal tank.

Under the postage rate structure which took effect April 3, 1988, 10.1 cents became the minimum piece rate for third-class mail presorted to the carrier route. By coincidence, under the previous rate structure, the 10.1-cent denomination was applied to third class mail presorted to five-digit ZIP Codes.

As with all stamps produced primarily for presorted mail, the new version was printed in precanceled form only.



FIRST DAY OF ISSUE